

# STANDARD MAL RESERVE 2KW POWER PACK

GEN-RSV-002-STD



The power pack consists of a 2kW module that can be safely swapped by one individual.

## Key features

- 20 kWh from fully-fuelled
- Display for monitoring power pack energy level
- 10-minute refuelling by service kit (supplied separately)
- Non-toxic and non-flammable
- In-built lifting handles
- Zero emission
- Fully recyclable
- 10 year life under normal operating conditions

## Typical applications

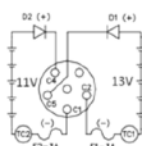
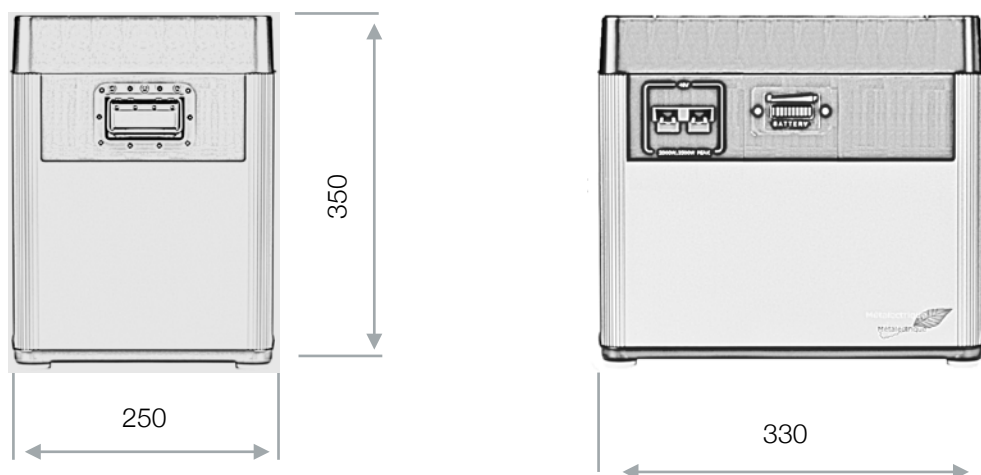
- Back-up power systems
- Light transport

Power pack electrical output	DC output
Power	3.5 kW (Peak)
	2 kW (Continuous)
DC voltage	48 V

Electrical characteristics	48V output
Typical capacity+21°C/+70°F	20 kWh
Operating temperature	-40°C to +71°C / -40°F to +160°F
Storage (Recommended max)	+35°C/+95°F
(possible)	-40°C to +71°C / -40°F to +160°F

Physical characteristics	Metric	Imperial
Typical weight	21 kg	46.3 pounds
Width	250 mm	9.84 inches
Height	350 mm	13.78 inches
Length	330 mm	12.99 inches
Power pack case	Stainless steel and polyethylene	

References	
Mating connector	Anderson
Refuelling method	Via service kit



### Completing the refuelling procedure

Depending on the commercial agreement with the user, the refuelling of the aluminium-air unit may require:

- The storage of each batch of refuelling kits in an approved Licensee Depot
- The cleaning of inside of each aluminium air pack
- The insertion of aluminium plates contained within each refuelling kit
- The introduction of a special water-based solution using the instructions provided within the refuelling kit
- The storage of used aluminium waste at the Licensee Depot for return to MAL/service partner

### MAL R&D Limited

1 Davy Rd  
Plymouth  
PL6 8BX

Stephane Collard  
Arcane Conseil France  
[www.al-air.com](http://www.al-air.com)  
[stephane@arcane-conseil.com](mailto:stephane@arcane-conseil.com)  
+33 660 62 650 (WhatsApp)

